

Grade 2 Investigations Matrix



Lyndhurst Primary has a play based learning pedagogy called the Walker Learning Approach. This resource has information about play-based learning and some simple practical ways parents can provide authentic play into their homes to engage students learning during home investigations time.

Activity 1 Cooking



Help your mum or dad make a meal. It can be breakfast, lunch, dinner or a snack. Write what you made and draw a picture in your scrapbook.

Activity 2 Dramatic Play



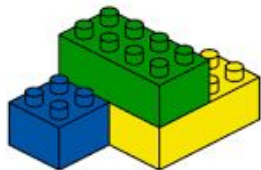
Be a character you choose. Write what character you chose to be and why. Draw a picture of your character.

Activity 3 Tinkering Area



Ask mum or dad if they need anything fixed around the house.

Activity 4 Blocks Construction



Use your imagination to build something using blocks.

Activity 5 Writing Area



Write a letter to a friend, family member or your teacher.

Activity 6 Art and Craft



Using craft materials at home to create an amazing project.

Activity 7 Nature Play



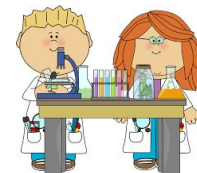
Go on a walk outside with an adult and collect a few things you find on the way. What did you make with them?

Activity 8 Sensory Play



Create something using playdough, sand, kinetic sand, dirt, rocks, etc.

Activity 9 Science



With an adults help, find a medium sized container, fill it almost to the top. Find 5 objects, like a bottle lid, see if they sink or float. Write down what you used and draw a picture.

**** Please note: You are more than welcome to complete these. However, this is NOT essential.**